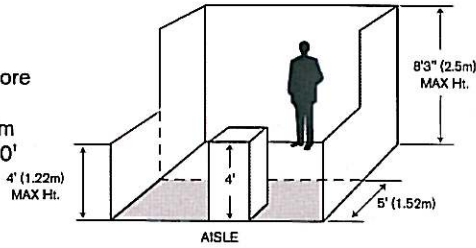


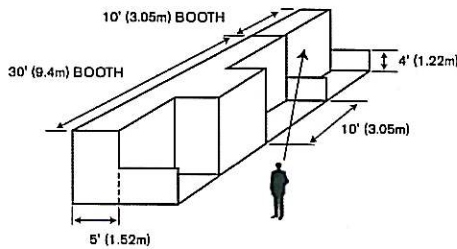
# Exhibit Construction Guidelines

## Standard Exhibit

Definition: One or more standard units in a straight line (minimum booth size is 10' x 10' = 100 sq. ft.)



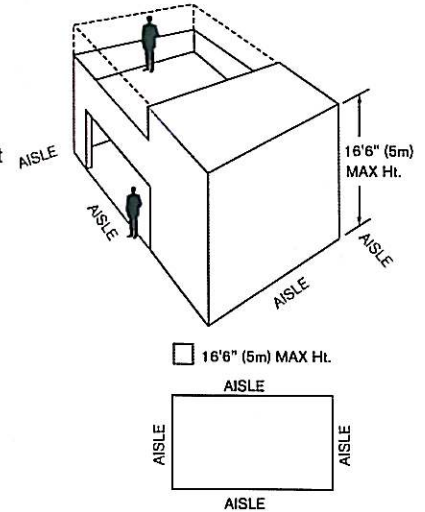
Display fixtures over 4' (1.22m) high must be confined to that area of the booth that is at least 5' (1.52m) from the aisle line.



## Island Booth

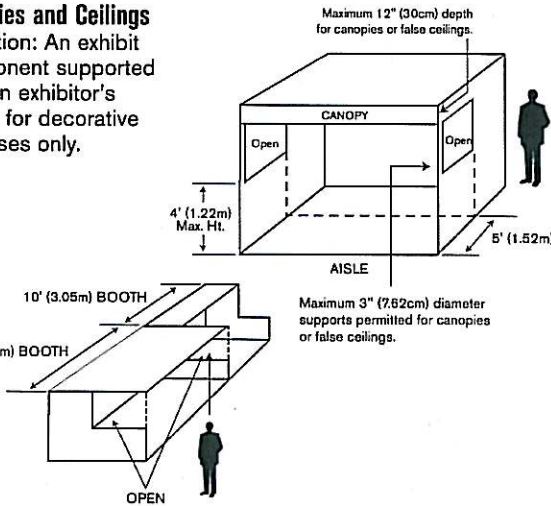
Definition: Exhibit with aisles on four sides. Exhibit components limited to maximum height of 16'6" (5m).

Hanging signs: Unlimited height.



## Canopies and Ceilings

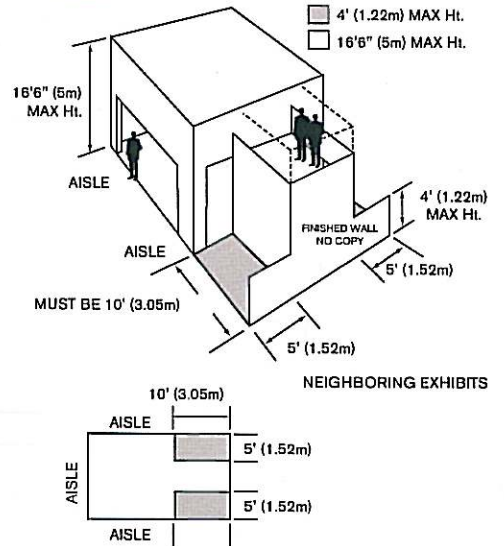
Definition: An exhibit component supported over an exhibitor's space for decorative purposes only.



## Peninsula Exhibit

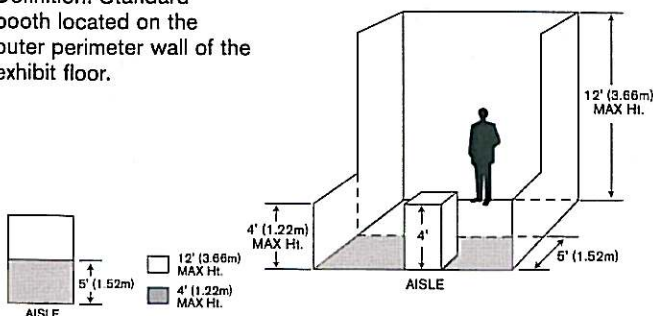
Definition: Exhibit with one or more display levels in four or more standard units back to back with an aisle on three sides. Hanging signs must be positioned at least 10' away from the adjoining booth. Exhibit components limited to maximum height of 16'6" (5m).

Hanging signs: Unlimited height.



## Perimeter Wall Exhibit

Definition: Standard booth located on the outer perimeter wall of the exhibit floor.



## Demonstrations/Sampling

The part of the exhibit program involving the interaction of exhibit personnel and their audience through corporate presentations, product demonstrations or sampling.

